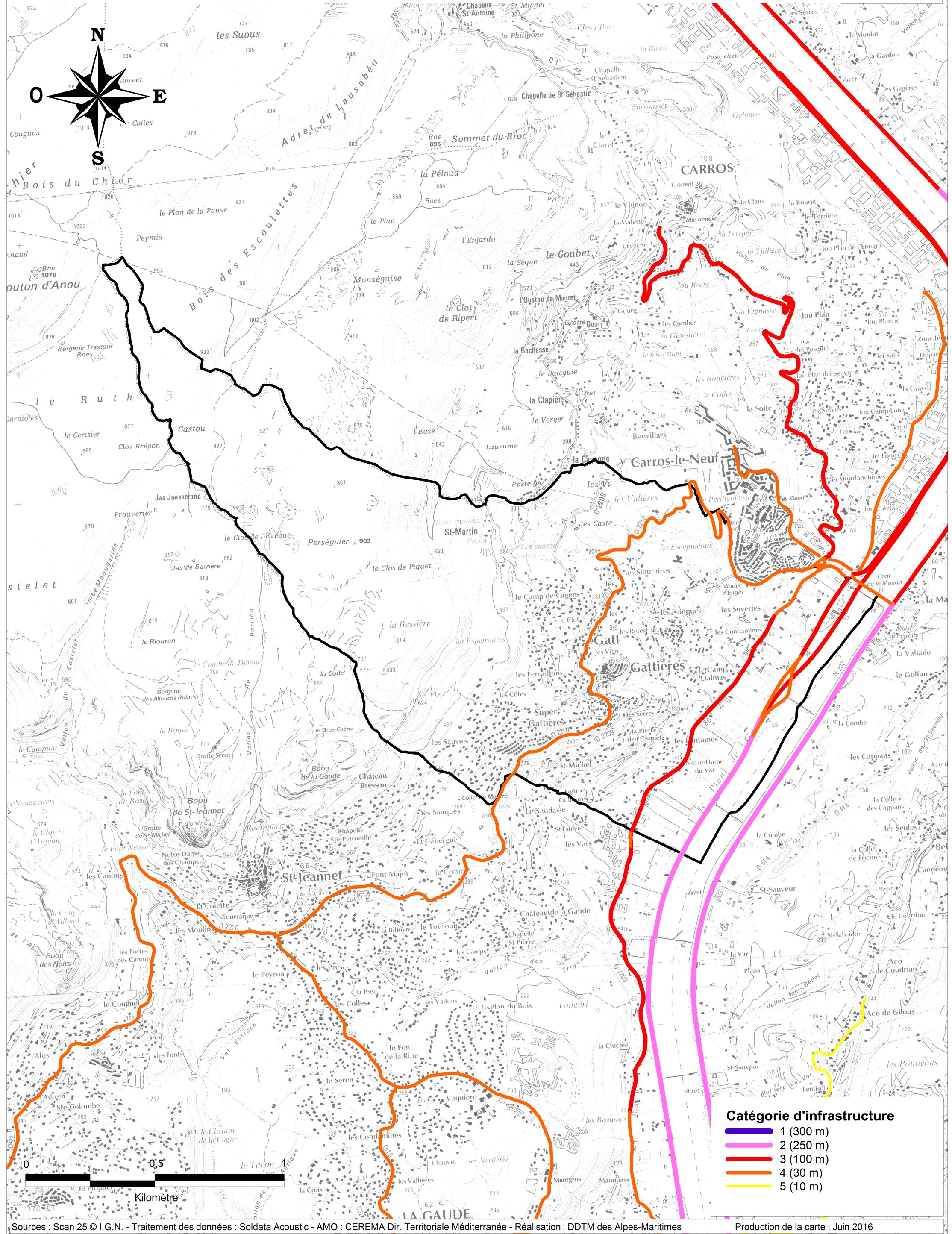







supportant un trafic de plus de 5 000 véhicules / jour T.M.J.A.



**Catégorie d'infrastructure**

|   |           |
|---|-----------|
|  | 1 (300 m) |
|  | 2 (250 m) |
|  | 3 (100 m) |
|  | 4 (30 m)  |
|  | 5 (10 m)  |