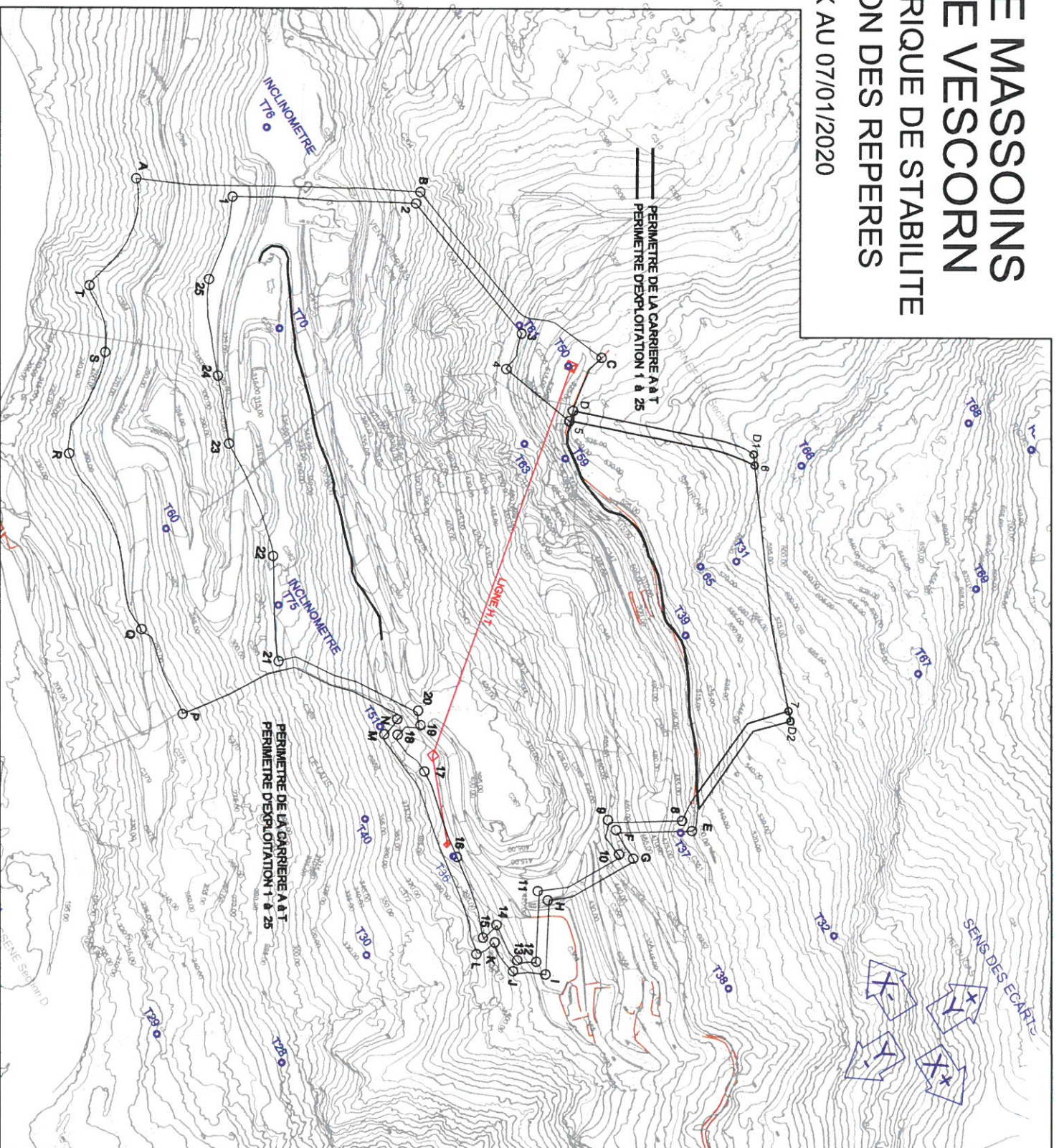


COMMUNE DE MASSOINS CARRIERE DE VESCORN

CONTROLÉ GEOMETRIQUE DE STABILITE PLAN DE SITUATION DES REPERES

ETAT DES LIEUX AU 07/01/2020

St. point	X	Y	Z
28	2034292,716	5199726,030	209,136
29	2034204,716	5199821,121	218,728
30	2034248,727	5199849,008	326,200
31	2034117,101	5200285,434	630,589
32	2034473,984	5200241,936	647,682
36	2034212,007	5199911,728	494,446
37	2034310,989	5200192,786	496,044
38	2034402,598	5200178,938	496,983
39	2034151,113	5200273,139	520,858
40	2034136,042	5199911,910	544,466
50	2033970,418	5200318,811	646,776
51	2034008,902	5199971,112	379,117
59	2033946,016	5200293,177	616,862
60	2033797,018	5199806,701	277,820
81	2033912,392	5200300,819	491,987
63	2033912,002	5200243,306	494,382
65	2034103,181	5200283,862	671,096
66	2034072,914	5200468,970	613,860
67	2034035,446	5200446,136	633,900
68	2034124,346	5200817,139	681,224
69	2034295,013	5200817,290	674,670
70	2033981,060	5200103,232	330,272
73	2034318,999	5200444,873	636,648
76	2033917,281	5199968,891	323,131
78	2033827,862	5200198,499	333,143
204	2034178,880	5200862,319	724,010
2001	2034003,113	5199950,648	292,791



Echelle: 1/5000

NIVELLEMENT RATTACHE AU NGF

TOPOSUD

S.A.R.L. au capital de 7622,45€

RCS NICE 352 874 473

18 rue Charles BAUDELAIRE .06100 NICE

TEL:04 93 51 55 28 FAX:04 93 51 59 92

e-mails : technic@toposud.com

REFERENCE : A8011_2020_03_16